



# Proficy Batch Execution from GE Digital

## Consistent manufacturing control without complex programming

### Help assure that your products are being manufactured correctly

Proficy Batch Execution from GE Digital is a powerful and feature-rich batch automation solution. The software provides a straightforward application development environment, empowering process owners to quickly and efficiently deploy batch automation, regardless of the underlying equipment.

The solution includes data collection, robust batch management, clear process visualization, and powerful supervisory control capabilities—enabling a complete batch solution for life sciences, food and beverage, consumer goods and specialty chemical industries.

#### Outcomes

- Reduce waste and increase product quality
- Increase efficiency and reduce costs
- Enable fast deployment with lower total cost of ownership
- Automation reduces human error
- Achieve maximum flexibility in a multi-product multi-batch environment

### 01 Powerful and easy recipes

Write, schedule and execute recipes that have sequence variations and compose drastically different recipes without having to modify PLC code. Based on the S88 model with the concept of classes, you can build recipes to run on any units within a class and gain greater agility.

### 02 Smarter and faster development

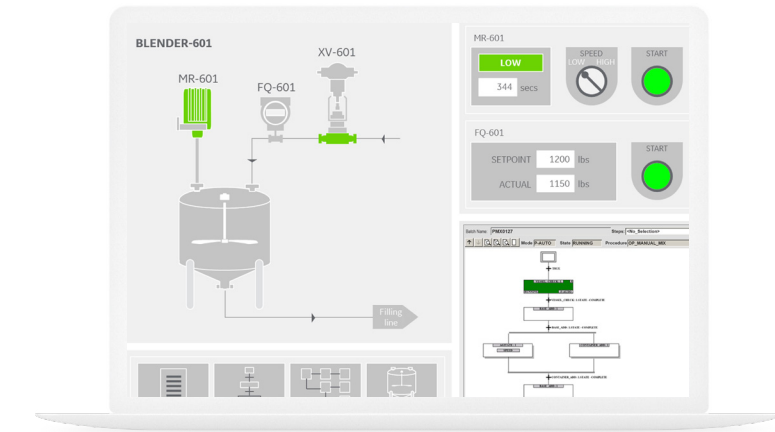
The software solution delivers a fast, simple, and effective batch development platform, which allows you to model your plant floor equipment, add equipment paths, equipment priority and status, and create and manage reusable recipe components.

### 03 Improved security and compliance

Proficy Batch Execution delivers point-of-entry verification through Electronic Signatures in the active controls and Recipe/Equipment editors—supporting 21 CFR Part 11 compliance by enabling equipment and recipe auditing and version control. It also centralizes the storage location for e-records with encrypted store-and-forward technology that automatically provides a runtime and configuration audit trail.

*"When it came to the point of implementation, we were pretty confident that it would work first time – and it did. The Batch Execution System worked properly right from outset."*

**Chris Barlow, Technical Director,  
Astec Solutions, Reckitt Benckiser optimization**



### 04 Open layered solution

Proficy Batch Execution seamlessly integrates with any OPC-compliant HMI/ SCADA, MES/ERP, PLC-based or DCS system, allowing OPC browsing to establish connection and automatic creation of tags, incorporating alarm and control changes.

### 05 Operator views and controls

Batch visualization can be incorporated into your GE Digital HMI/SCADA Screens. Procedures can be seen in a Sequential Function Chart (SFC), table, event journal. Work Instruction provides the operator with a sequence of steps to properly execute a batch. Campaign Manager allows for automatic scheduling of batches.

**NEW!** Operators can use a web client such as Proficy Operations Hub to interact with Proficy Batch Execution.



# Proficiency Batch Execution from GE Digital

Consistent manufacturing control without complex programming

## Features

- ISA S88.01 Compliant System provides a standard structure for your plant floor, simplifying the development of batch systems.
- NEW! Optional REST APIs: Operators can use a web client such as Proficy Operations Hub to interact with Proficy Batch Execution. Supports recipe management, batch execution, and electronic work instructions.
- IEC 61131-3 Sequential Function Chart programming language provides a simple graphical language for developing procedure flow in recipes.
- Formulation Management allows engineers to reuse validated recipe procedures with predefined parameter sets.
- Campaign Management simplifies the operator experience of fulfilling large process orders by accepting a process order and scheduling a list of batches.
- Transition Breakpoints allow engineers to temporarily pause a batch during execution.

## Software requirements

- Windows 7, 8, or 10
- Windows 2008, 2012, or 2016 Server  
(NOTE): Proficy Batch Execution does not install directly on any 64-bit operating system. Proficy Batch Execution does support 64-bit operating systems utilizing WOW (Windows on Windows).

Hardware and software requirements are representative and may vary by customer deployment. Please consult the product documentation for more details.

Improve your process with the proven capabilities in Proficy Batch Execution and HMI/SCADA from GE Digital. With efficient batch control and real-time monitoring, you can reduce waste, minimize operator errors, and increase product consistency.

LEARN MORE





# Proficiency Batch Execution from GE Digital

## Consistent manufacturing control without complex programming

### Services

In the world of Industrial Internet of Things (IIoT), organizations are able to optimize productivity, reduce costs, and achieve Operational Excellence. While this is an exciting time for opportunity and growth, it can also bring on new challenges, questions, and uncertainty. No matter where you are on your IIoT journey, GE Digital has the right services offering for you.

**Advisory Services** We can help you plan and start your IIoT journey in a way that aligns to your specific business outcomes.

**Managed Services** We can help you maintain your critical machines from one of our remote locations around the world using model-based predictive-analytic technology.

**Implementation Services** Our team will help develop a collaborative, multigenerational plan that will marry your existing investments to the right process enhancements and technology.

**Education Services** We specialize in education services to ensure that you're leveraging our solutions to the fullest extent with our training and certificate programs.

**Acceleration Plan Support Services** Let us help by ensuring that your business continues to operate at its highest efficiency, all while mitigating risks to your investments.

**Cyber Security** Our solutions provide industrial-grade security for a wide range of OT network and application topologies.

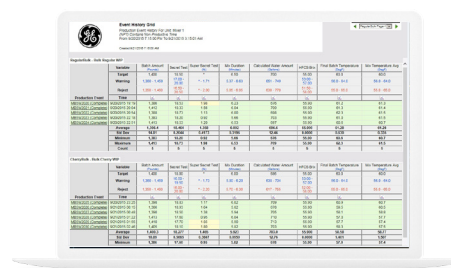
#### About GE

GE (NYSE: GE) is the world's Digital Industrial Company, transforming industry with software-defined machines and solutions that are connected, responsive and predictive. GE is organized around a global exchange of knowledge, the "GE Store," through which each business shares and accesses the same technology, markets, structure and intellect. Each invention further fuels innovation and application across our industrial sectors. With people, services, technology and scale, GE delivers better outcomes for customers by speaking the language of industry.

©2020 General Electric. All rights reserved. \*Trademark of GeneralElectric. All other brands or names are property of their respectiveholders. Specifications are subject to change without notice. 10 2020

### Related products

GE Digital's **HMI and SCADA** helps you precisely monitor, control, and visualize every aspect of your operations, enabling operators to make the best decisions faster.



# PREDIX

#### iFIX and CIMPLICITY →

Gain visibility into your operations and secure agility for smarter decision making that drives results.

#### Proficy Plant Applications' Batch Analysis →

Maximize overall equipment effectiveness (OEE), improve production scheduling, and ensure product quality by leveraging real-time production data.

#### Predix →

Innovate and transform your business with the cloud-based operating system for the Industrial Internet, purpose-built for industry.

#### Contact

[www.ge.com/digital](http://www.ge.com/digital)

### Continue your IIoT journey

Transforming your business requires innovative foundational solutions that lay the groundwork for optimized performance.



#### Proficy Historian →

Optimize asset and plant performance through time-series industrial data collection and aggregation, leveraging Predix IIoT connectivity.



#### Proficy Workflow →

Guide operators with dynamic, interactive electronic work instructions and eSOPs for more consistent operations and optimized processes.



#### Cyber Security for OT →

Take the right actions to increase resilience, help ensure safety, and maintain availability across your operational technology (OT)

